

NEW

D300

Middle Level

High 384x288 resolution detector and laser ranging

DUO-VISION PLUS



Laser ranger finder(LRF)

The LRF integrated into the D300 can help users to acquire accurate information of the target position and distance, it can also correct the distance configuration for temperature measurement automatically, no need for manually input.

Port type C

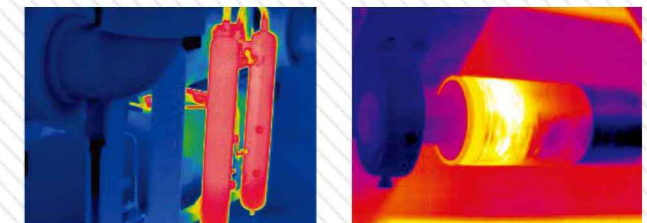
D300 adopts the powerful type C port, which works with front and back side of the cable plug, making the operation even easier, especially under the dark environment. It gives users high transmission speed and quick charging, making the camera better durability.

- | | | | | | |
|---|---|---|--|--|--|
| 
Ergonomic Design | 
Shock Resistance | 
USB | 
Multi-sockets | 
DUO-VISION PLUS | 
IP54 |
| 
Abnormal Temperature Alarm | 
Bluetooth | 
8 hours Continuous Operation | 
Sun Shield | 
Multi-lenses optional | 
Easy to Operate |



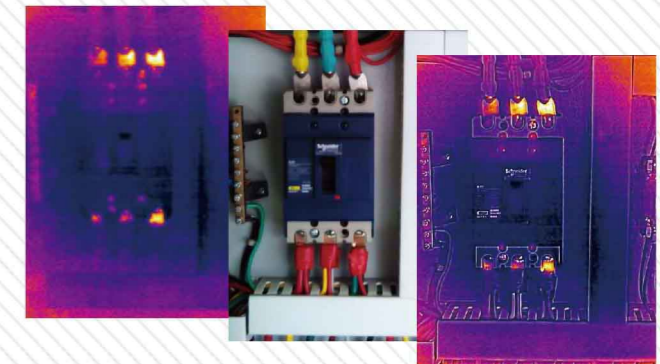
Long time operation

nearly 8 working hours, incomparable by any other products in the market



DUO-VISION PLUS technology

By applying the unique DUO-VISION Plus technology, infrared image and visual image can be merged together to deliver high quality thermal image with exquisite details, making it even easier for the users to find out more.



IR video recording

The IR video recording function enables the users to review the IR video and perform further analysis, giving the users full control to the operational status of the target.



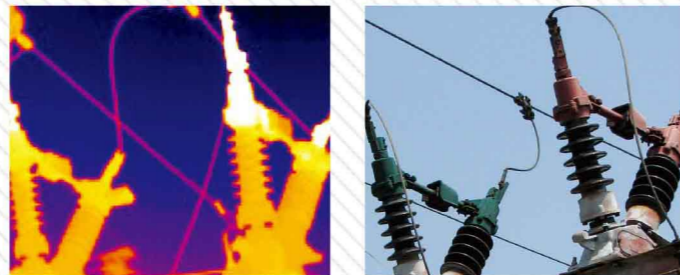


Excellent imaging quality

D300 applies the new image processing technology, which reduces the noises, together with the excellent performance of the 384x288 infrared detector, D300 provides high quality infrared image with clear and fine details.

5 Million Pixels CCD

D300 integrates the 5 million pixels CCD, providing the users with absolute clear visual image.



Flip and rotatable LCD

Well matched with 384x288 detector, the 3.5inch rotatable LCD can satisfy the users' need for most clear and straightforward vision in any direction without missing any potential risk.



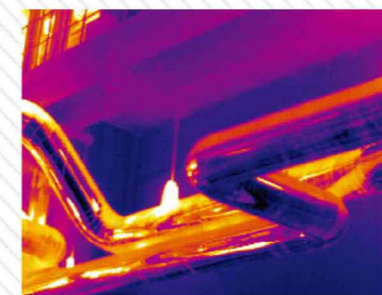
Flip and rotatable LCD

Superior Image- Comparable to Highend cameras

large storage capacity(built-in)

16GB built-in memory ensures the reliability and stability, making it possible to take images or videos without the need for extra memory.

 Abnormal Temperature Alarm	 Bluetooth	 8 hours Continuous Operation	 Sun Shield
 Ergonomic Design	 Shock Resistance	 DUO-VISION PLUS	 Multi-sockets



Type	D300
Image performance	
FOV	24° x18°
Spatial resolution	1.3 mrad
Thermal sensitivity	≤0.05°C@30°C
Detector resolution	384 x288
Focus	Motorized/Automatic
Image presentation	
Image mode	IR/CCD/DUO-VISION PLUS
Visible pixels	High Definition CCD
LCD Display	3.5" reversible capacitive touch screen
Image output mode	Analog video output
File format(Thermal/Visual)	.JPG
Temperature measurement	
Measurement range	-20°C ~ +600°C (up to 1500°C, optional)
Accuracy	±2°C or ±2% of readings
Laser	
Type	Class 2, 1mW/635nm, red
Laser ranging	Yes
Measurement range	0.05m ~ 30m
Protective Performance	
Encapsulation	IP54
Shock/Vibration resistance	25G/2G
Drop resistance	2 meters
Operating temperature	-20°C~+50°C
Additional features	
Built-in memory	Yes
USB Ports	Type-C
Video record	Yes
Bluetooth	Yes (Optional)
WIFI	Yes (Optional)
Real-time transmission	USB real-time transmission with temperature data (Optional)
Battery life	8 hours